



Thinking Big on Transit: Charlotte Success Story and Regional Visioning

WNC Air Quality Conference
July 27, 2018

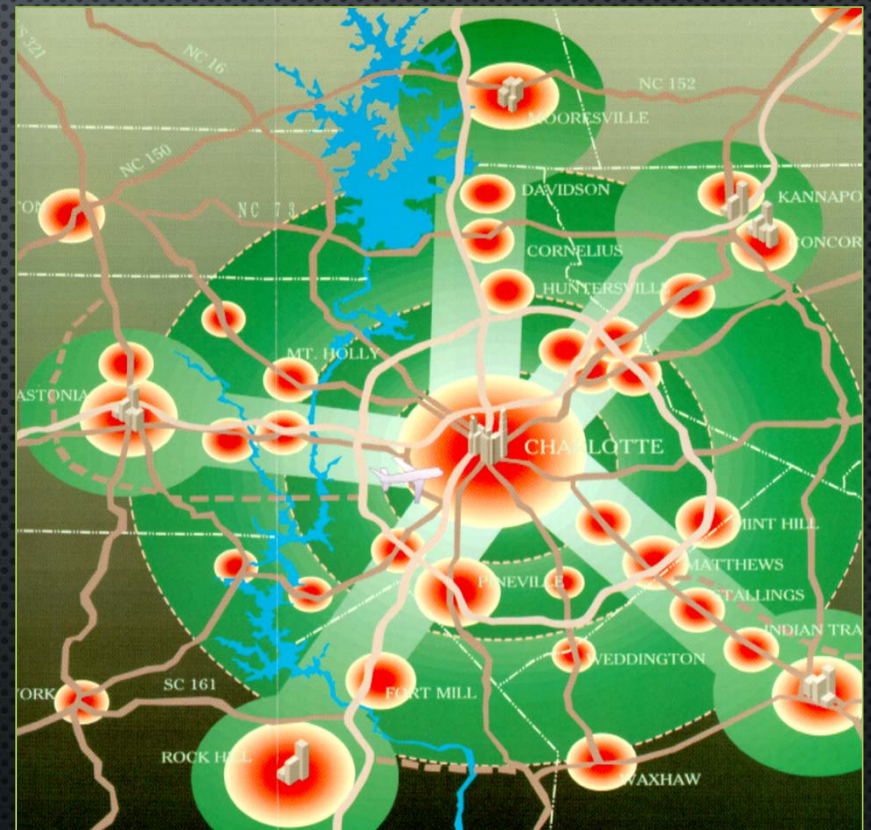
Jason Lawrence | CATS
Jason Wager | Centralina COG



Committee of 100 - 1994

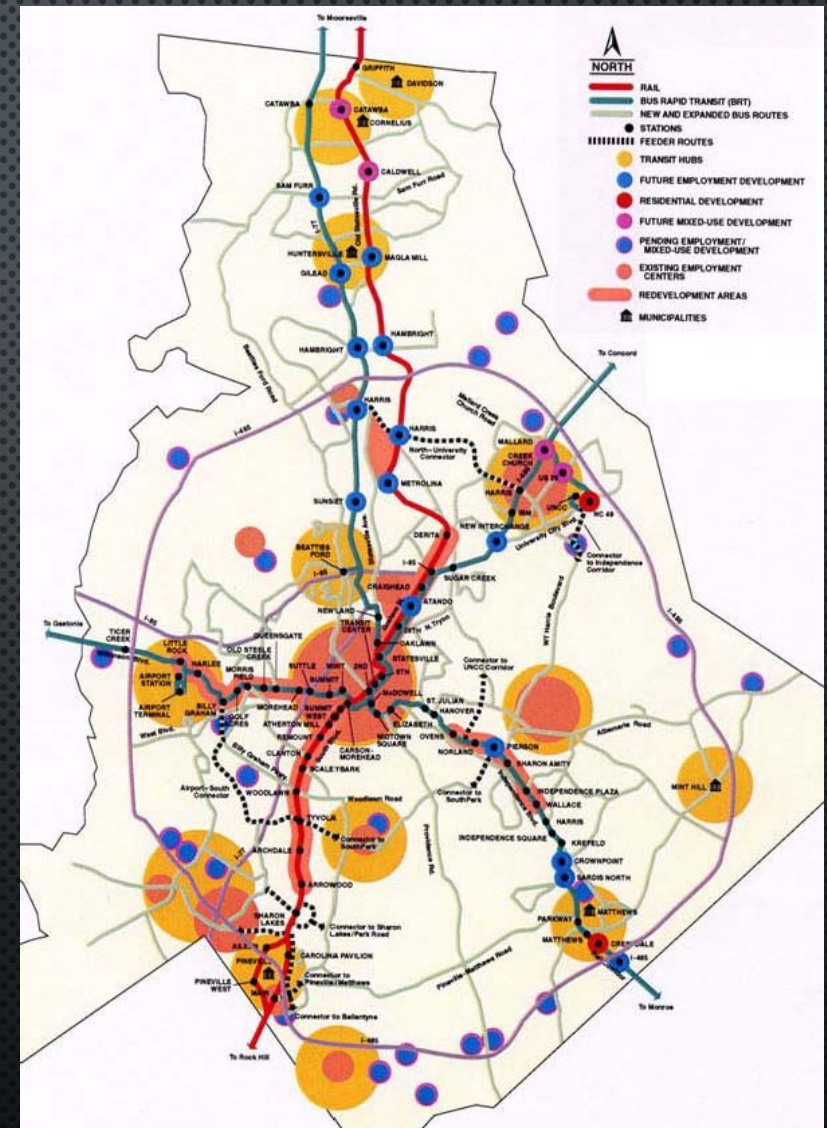
CENTERS AND CORRIDORS STRATEGY

- LONG-TERM GROWTH MANAGEMENT STRATEGIES FOR CHARLOTTE-MECKLENBURG
- FIVE PRIMARY TRANSPORTATION AND DEVELOPMENT CORRIDORS
- TRANSFORM UNFOCUSED DEVELOPMENT PATTERNS IN CORRIDORS AND WEDGES TO COMPACT MIXED-USE DEVELOPMENT ALONG CORRIDORS AND IN STATION AREAS



2025 Transit / Land Use Plan

- Vision for a long-term growth management strategy for Charlotte-Mecklenburg
- Integrates rapid transit and mixed-used development along 5 transportation corridors
- Expands transit system to serve between the rapid transit corridors
- Provide more transportation choices to meet mobility needs
- Support sustainable growth for region
- Updated in 2006
2030 Transit System Plan



BUS RAPID TRANSIT



variety of trips from regional to local

- Operates in a variety of ROW scenarios
- Service throughout the day and on weekends

STREETCAR



distance trips in urban areas

- Typically operates in mixed traffic
- Service throughout the day and on weekends

LIGHT RAIL



variety of trips from regional to local

- Typically operates in dedicated ROW
- Service throughout the day and on weekends

COMMUTER RAIL



longer-distance commute trips from suburbs into a central city

- Operates in dedicated ROW
- Service during peak hours of travel M-F

2030 Transit System Plan Status

Operating

- LYNX Blue Line Light Rail
- Sprinter Airport Enhanced Bus
- CityLYNX Gold Line Phase 1

Under Construction

- CityLYNX Gold Line Phase 2

Under Design

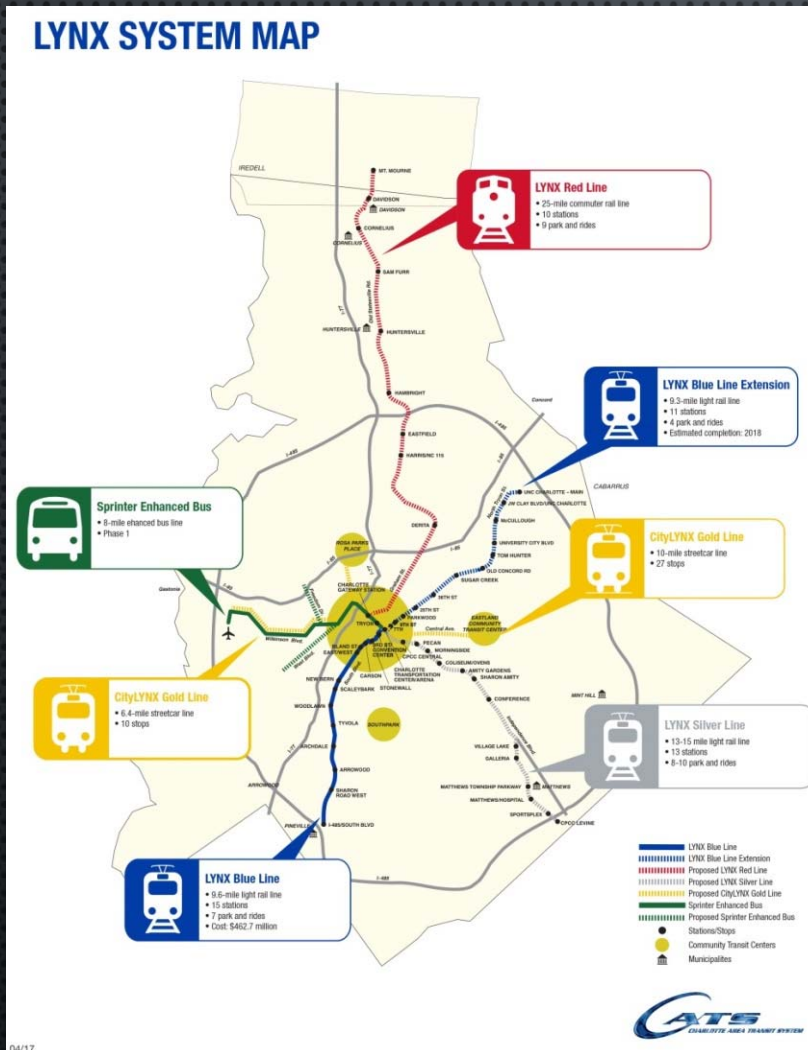
- Charlotte Gateway Station

Recently Approved

- LYNX Silver Line Light Rail Adopted by MT in November 2016

Under Study

- LYNX Red Line
- LYNX West Corridor
- LYNX Silver Line Center City
- System Integration



More than rail



Neighborhood shuttles



Paratransit



Express Bus



Light Rail



Local Bus



Streetcar

Over 80% of ridership
is generated from
non rail vehicles



Branded service



Vanpool

- Opened November 2007
- Ridership is 5 million annually
- \$462.7 million capital investment with funding partnership

LYNX Blue Line (South Corridor)



LYNX Blue Line Extension

OPENED MARCH 16!



Parking Overview

- 3 Parking Decks (Sugar Creek, University City Blvd, JW Clay)
- One surface lot (Old Concord Station)
- Over 3,200 new parking spaces
- Active use space at all vertical parking garages
- Bicycle storage space
All stations



Sprinter Airport

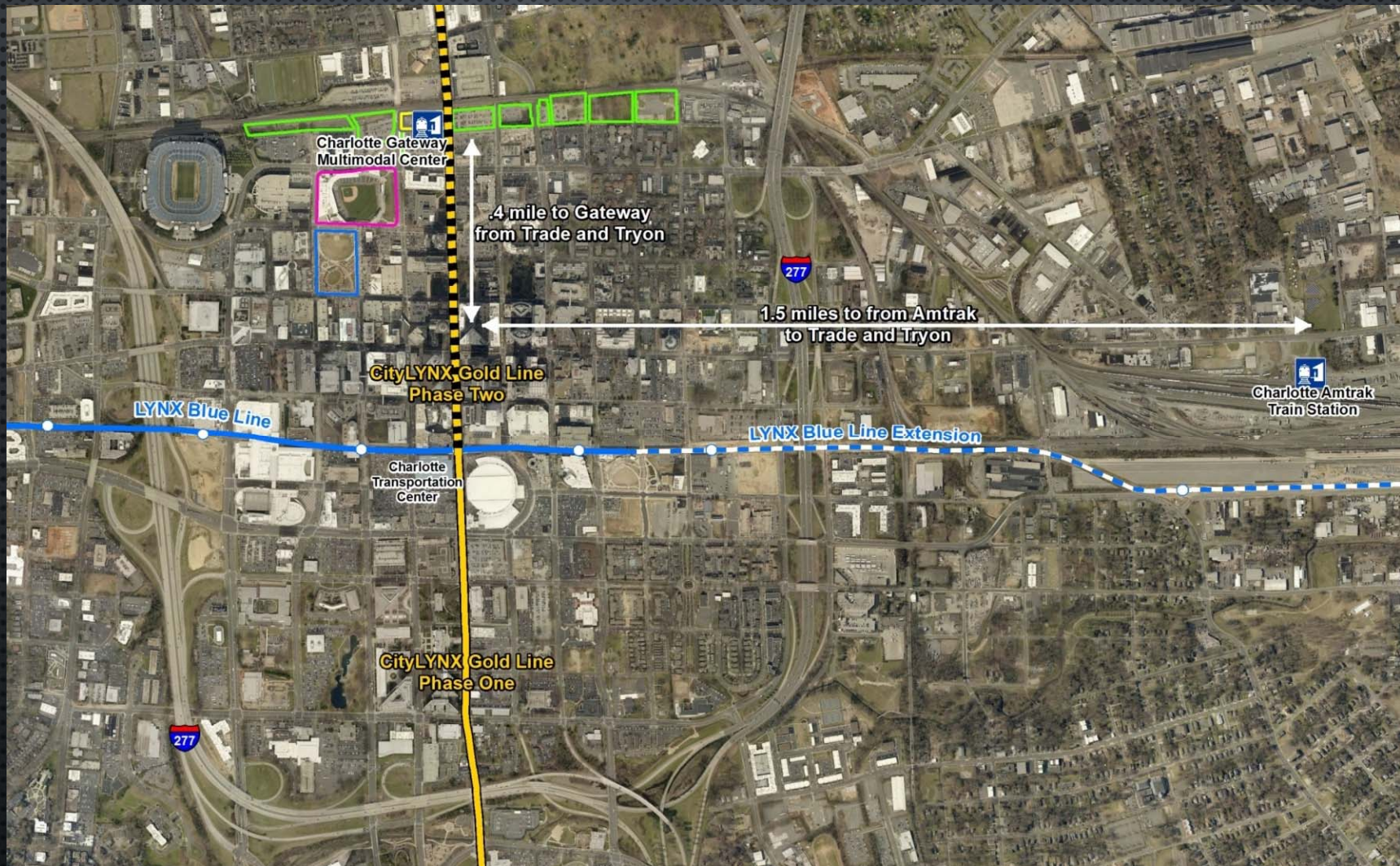
- Amenity driven, limited stop, bus service with consistent frequency seven days a week
- 20-minute headway throughout the weekday and 30 minutes on nights and weekends



CityLYNX Gold Line



Charlotte Gateway Station

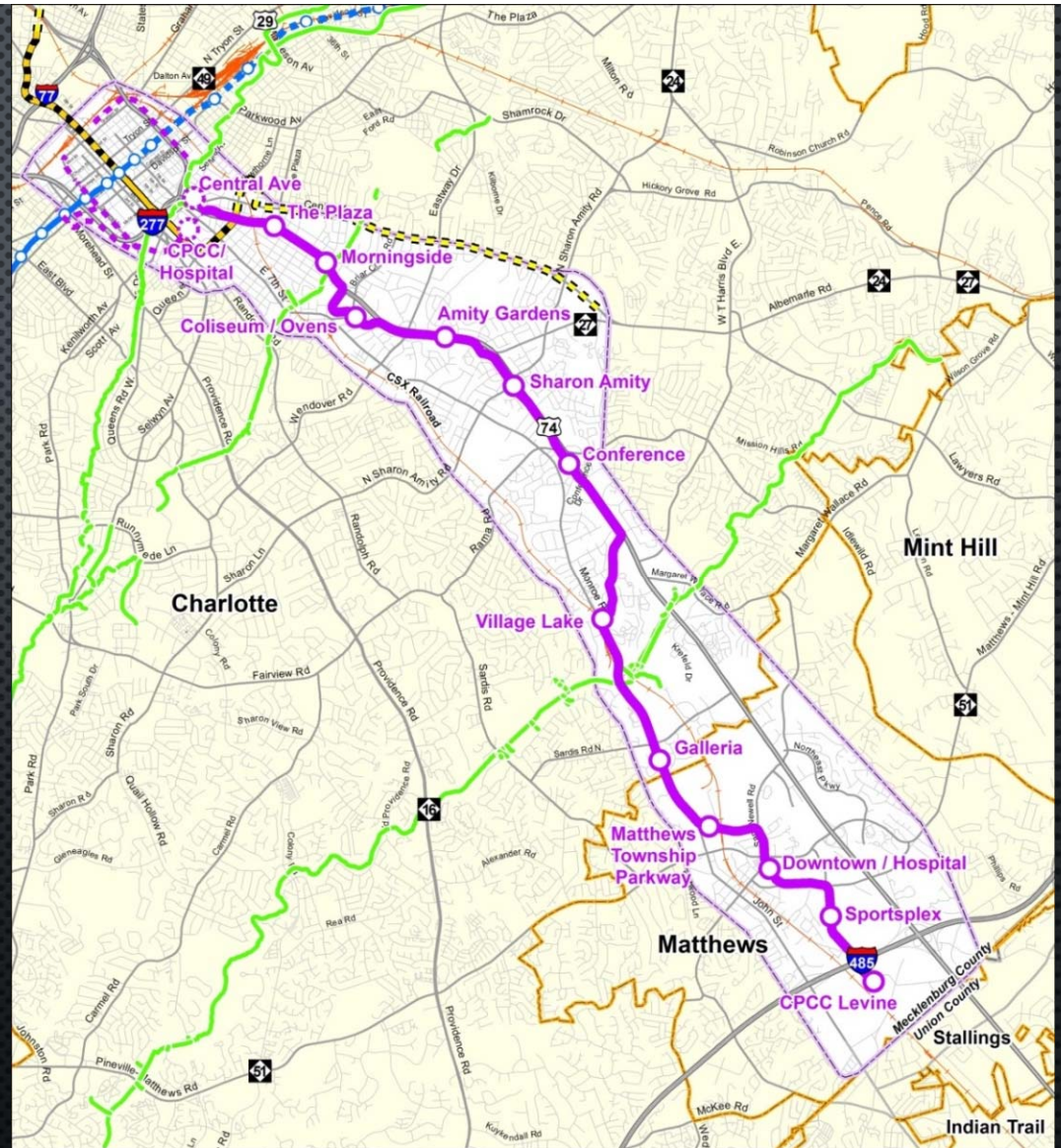




- 40,000+ SF rail station building (minimum levels are concourse; plaza and mezzanine)
- 850,000 SF private development
- ~900 parking spaces on four levels of subsurface parking (~200 reserved for rail customers)
- Greenway integrated with outdoor plaza space

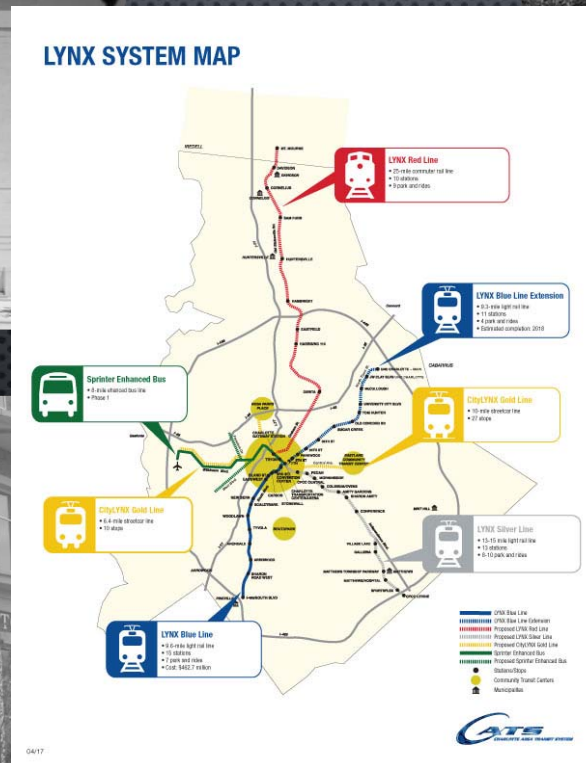
LYNX Silver Line

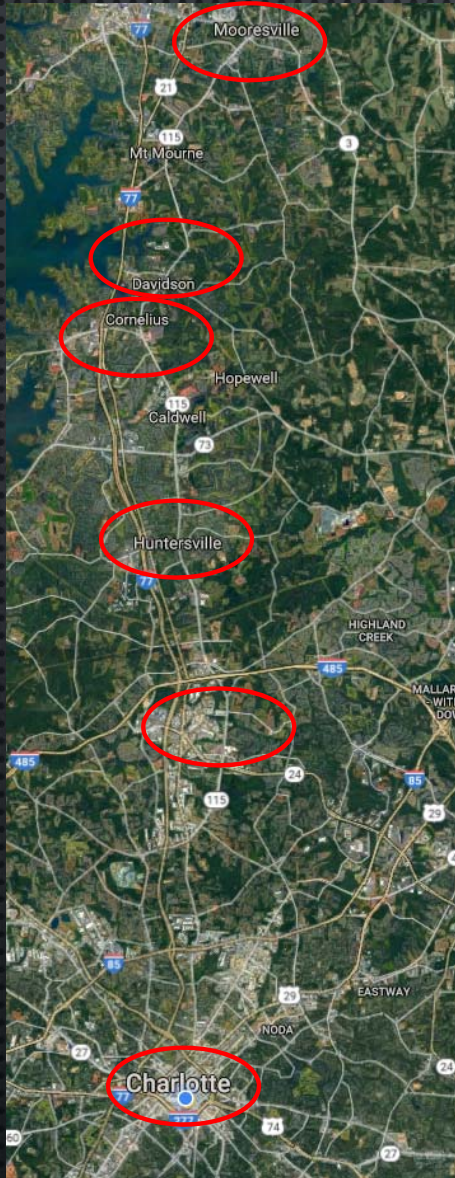
- MTC approved recommendation of light rail LPA in November 2016
- 13-15 miles long
- 13 stations with 8-10 park and ride locations
- Center City alignments to be considered as part of LYNX System Update



LYNX SYSTEM UPDATE

NORTH CORRIDOR, WEST CORRIDOR, SYSTEM INTEGRATION





Davidson to Mooresville 6 miles

I-485 to Davidson 9.5 miles

Uptown Charlotte to I-485 9.5 miles

Uptown Charlotte to Mooresville 25 miles

LYNX Red Line Plan Current Plan

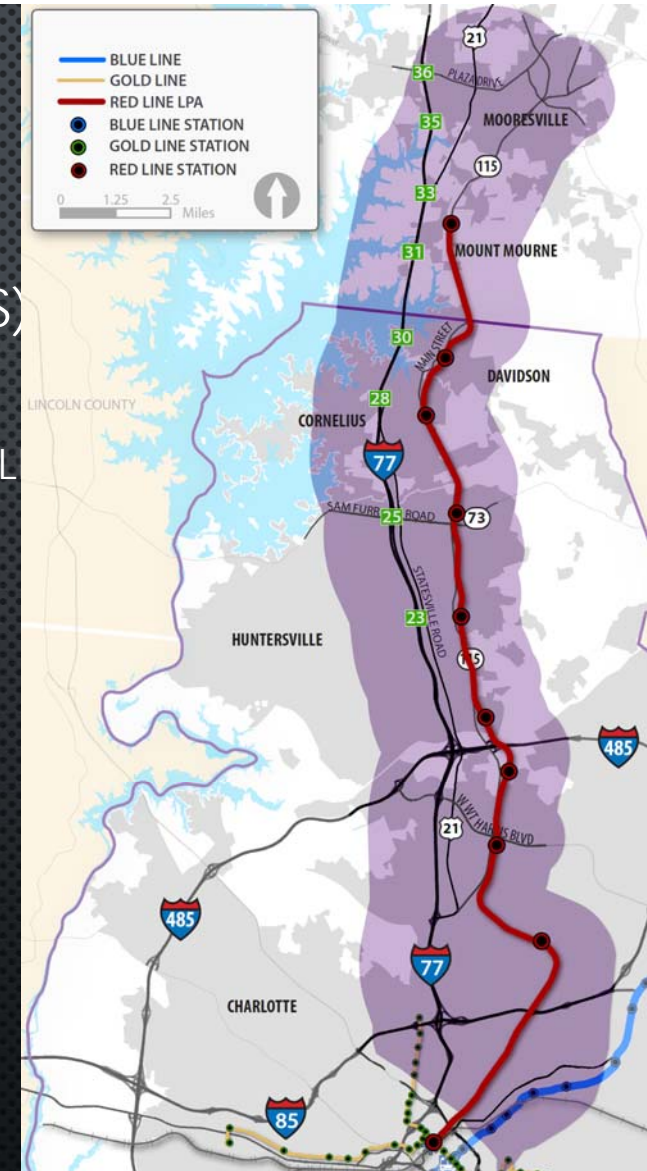
- **CURRENT PROPOSAL:**

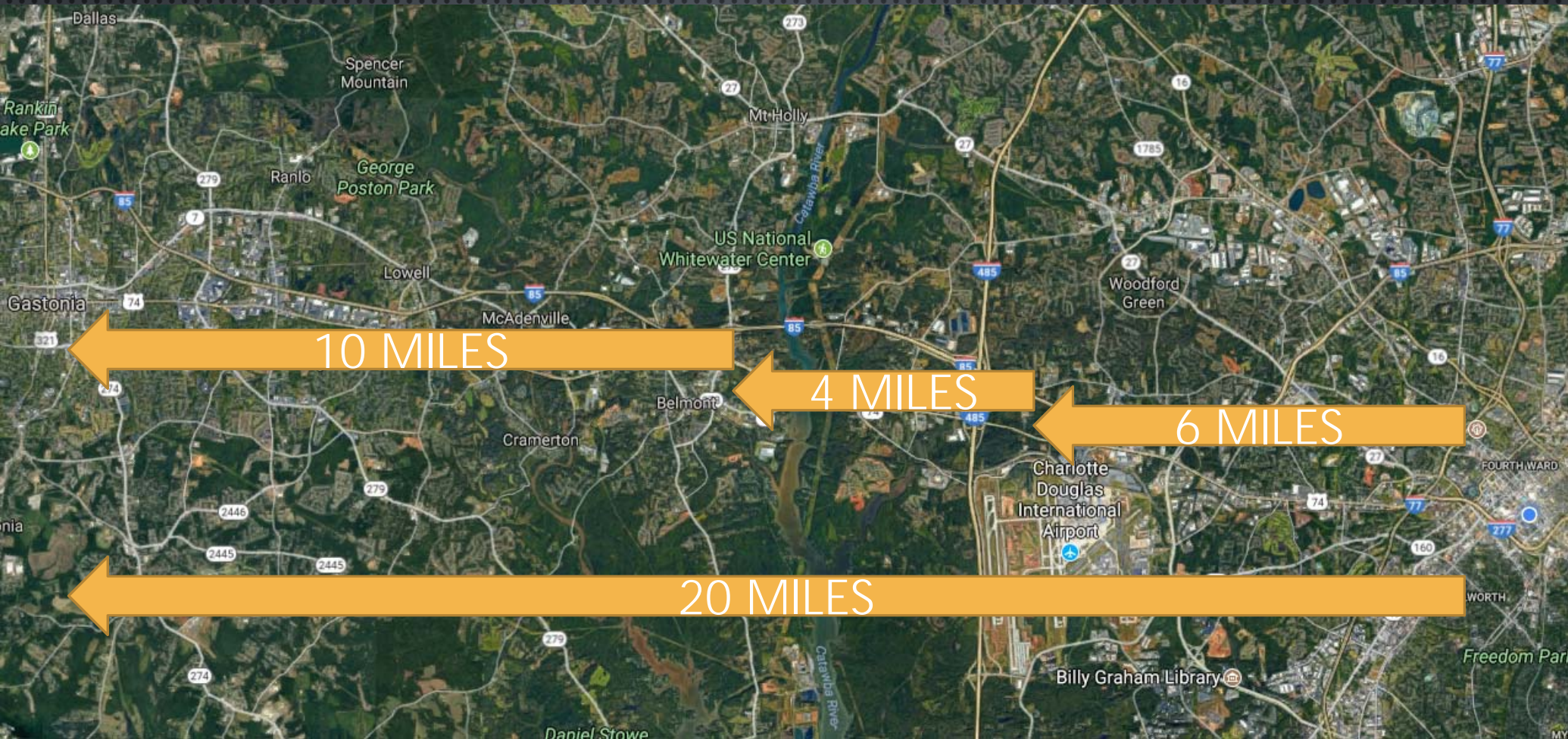
LYNX RED LINE COMMUTER RAIL

- UTILIZES EXISTING TRACKS OWNED BY NORFOLK SOUTHERN (NS) FROM SOUTH OF MOORESVILLE TO UPTOWN CHARLOTTE
- STRONG DOWNTOWN LAND USE CONNECTION IN MOORESVILLE, DAVIDSON, CORNELIUS, AND HUNTERSVILLE
- TAKES ADVANTAGE OF EXISTING INFRASTRUCTURE TO MANAGE COSTS
- INTENDED TO TERMINATE AT MULTIMODAL CHARLOTTE GATEWAY STATION

- **CURRENT STATUS**

- NS REMAINS OPPOSED TO PASSENGER RAIL ON THEIR TRACKS
- PEAK AND LIMITED MIDDAY SERVICE ONLY

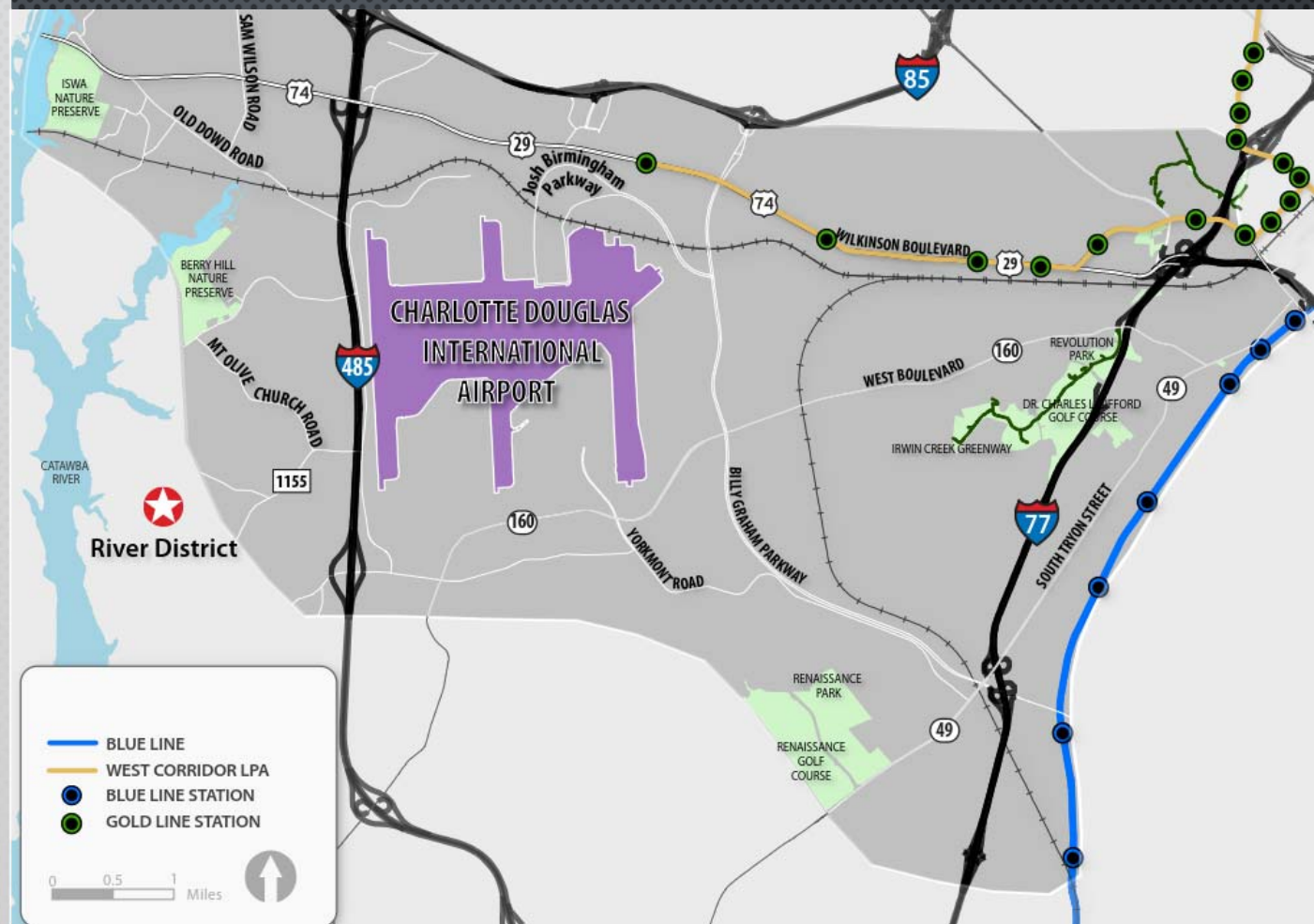




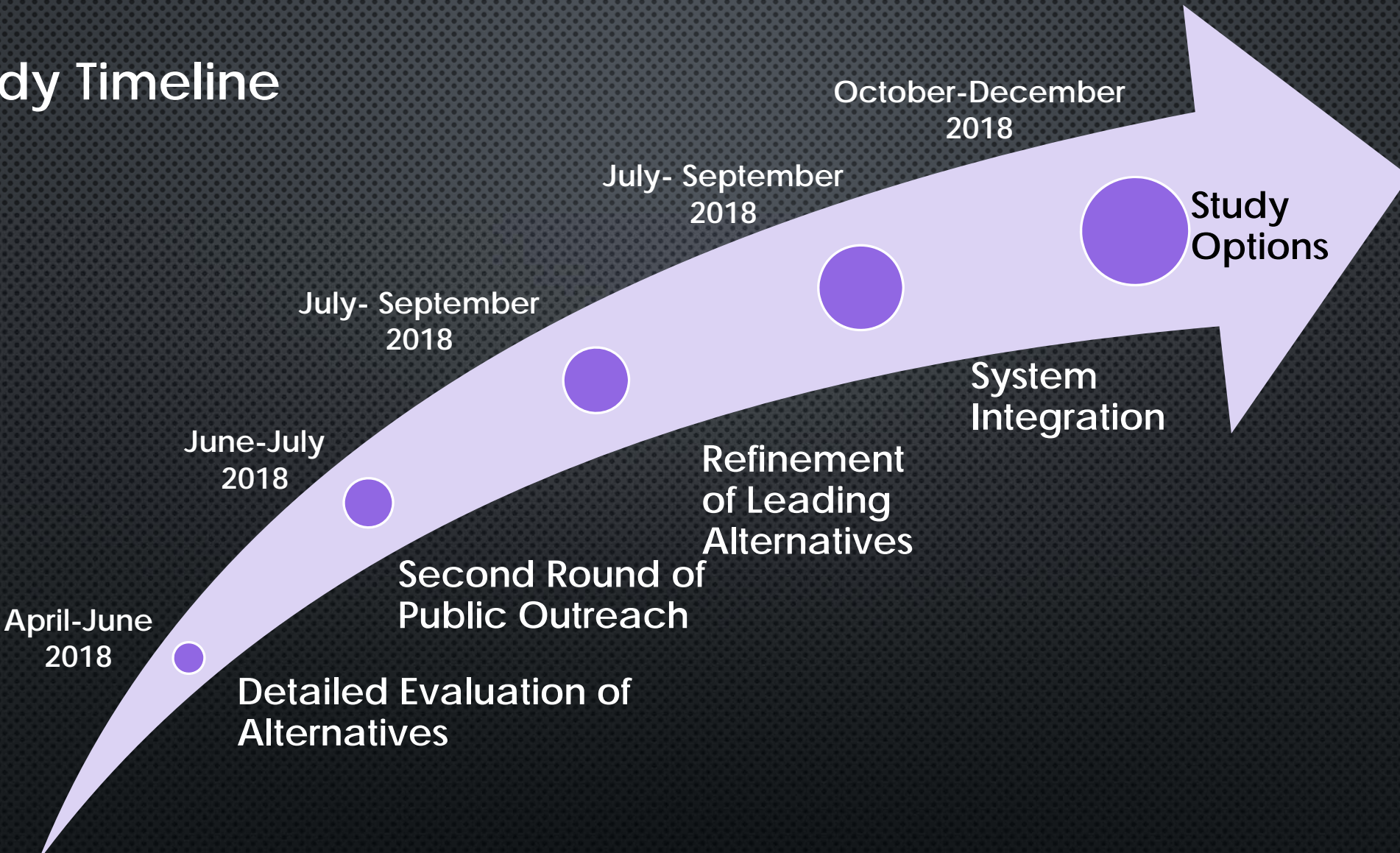
WHAT HAS CHANGED?

- AIRPORT COMMERCIAL DEVELOPMENT STRATEGY
- RIVER DISTRICT
- WEST BLVD CORRIDOR STUDY
- WILLINGNESS TO EXPLORE NEW ROW CONCEPTS
- IDENTIFIED AS EXTENSION OF SILVER LINE
- GASTON COUNTY STAKEHOLDERS HAVE EXPRESSED INTEREST

LYNX West Corridor



Study Timeline



Regional Transit Engagement Series 2017-2018

METROPOLITAN TRANSIT COMMISSION • CENTRALINA COUNCIL OF GOVERNMENTS

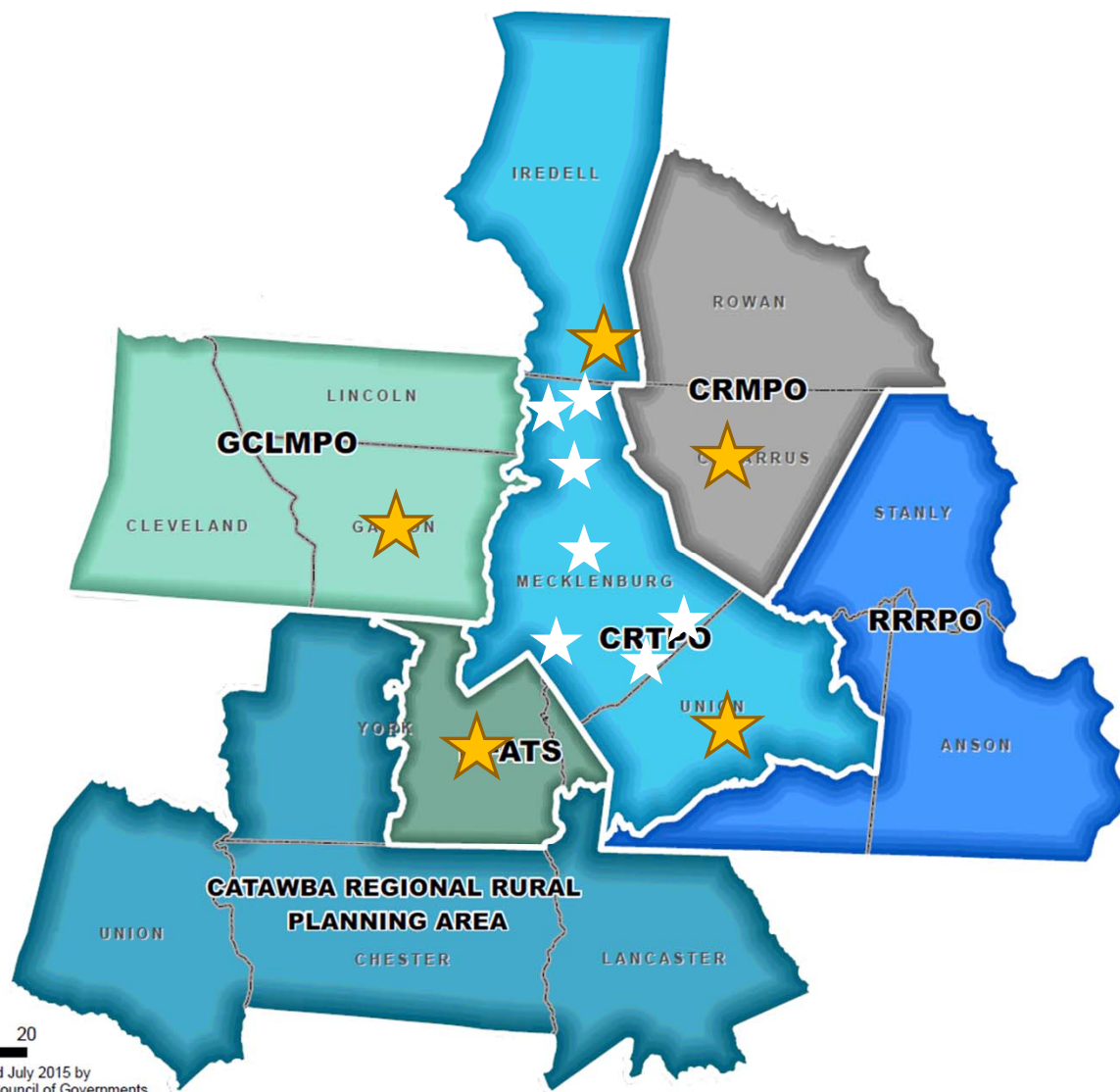


REGIONAL TRANSIT

- ❖ Why Now?
- ❖ Regional Transit Engagement Series Findings
- ❖ Next Steps

Regional
Transit
Engagement
Series
2017





Metropolitan Transit Commission

- NCDOT
- Mecklenburg Mayors
- Chair, Mecklenburg County Board of Commissioners
- SCDOT
- Mayors from:
 - Concord
 - Gastonia
 - Monroe
 - Mooresville
 - Rock Hill



Vibrant Communities – Robust Region



14 counties

NC Older Adult Population 2016 - 2036

Ages	2016		2036		% Change 2016-2036
	#	%	#	%	
Total	10,155,942		12,440,324		22%
60+	2,169,194	21%	3,293,615	26%	52%
65+	1,560,794	15%	2,603,271	21%	67%
85+	177,453	2%	367,617	3%	107%

Source: NC Division of Aging and Adult Services

This map illustrates the Charlotte Urbanized Area, highlighting the expansion from the 2000 area to the 2010 area. The 2000 area is shown in a darker purple shade, while the 2010 area is shown in a lighter purple shade. The map includes major highways such as I-85, I-77, I-485, and US-70. Numerous cities and towns are labeled, including Newton, Troutman, Salisbury, Mooresville, Davidson, Huntersville, Kannapolis, Concord, Harrisburg, Charlotte, Gastonia, Dallas, Mountain Island Lake, Shelby, Double Shoals, Lincolnton, Cherryville, Gaffney, Rock Hill, Fort Mill, Waxhaw, Van Wyck, Trinity, Marshville, Monroe, Matthews, Fairview, Burnsville, Norwood, Albemarle, Gold Hill, China Grove, Healing Springs, Cotton Grove, High Rock Lake, and Saratt. The map also shows various water bodies like Knob Creek, Double Shoals, and Mountain Island Lake.



CONNECT OUR FUTURE

Regional Growth Framework

Vibrant Communities – Robust Region



CONNECT OUR FUTURE

Regional Growth Framework

Vibrant Communities – Robust Region



TOP PRIORITIES FOR THE CONNECT REGION



More Transportation Choices



Cost of My Commute



Improved Air Quality



Support Our Communities



More Housing Choices



Parks & Open Space



Support Local Farms



Cost of Providing Services



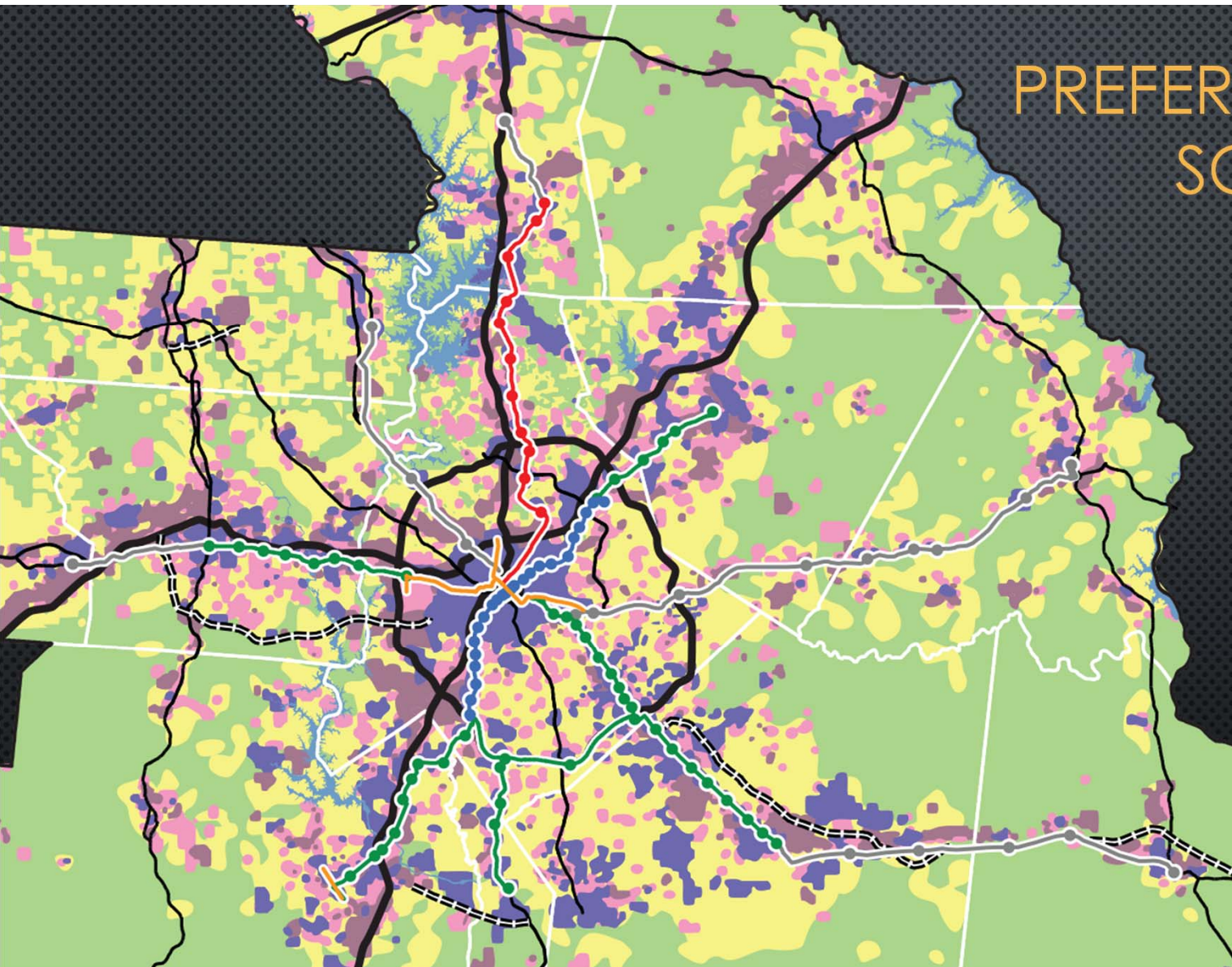
Improved Water Quality



Work Closer to Home

PREFERRED GROWTH SCENARIO

Multiple Centers
Connected by
Regional Transit



Transit

- Commuter Rail
- Light Rail
- Bus Rapid Transit
- Streetcar
- Post-2050

- Rural Living / Open Space
- Suburban Neighborhoods
- Industrial Center
- Suburban Office & Commercial
- Mixed-Use, Walkable Centers & Neighborhoods

ULI REALITY CHECK RESULTS

TOP VOTES



MOST IMPORTANT GUIDING PRINCIPLE OVER NEXT 30 YEARS

Support enhanced transportation connections within the region and other parts of the state



WHERE TO PRIORITIZE INVESTMENTS IN TRANSPORTATION

More light rail and commuter rail transit



Vibrant Communities – Robust Region



PROSPERITY

FOR GREATER CHARLOTTE

2017-2022

COMPREHENSIVE ECONOMIC DEVELOPMENT STRATEGY

SWOT ANALYSIS

REGIONAL SURVEY FINDINGS

TOP 3 COMPETITIVE STRENGTHS:



- 1-Geographic location 72%
- 2-Cost of living 56%
- 3-Lifestyle 39%

TOP 3 COMPETITIVE WEAKNESSES:



- 1-Transportation Infrastructure 54%
- 2-Government/Political Leadership 45%
- 3-Pre K-12 Schools 33%

PROSPERITY

FOR GREATER CHARLOTTE

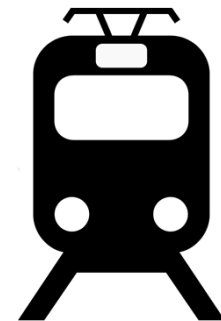
2017-2022

COMPREHENSIVE ECONOMIC DEVELOPMENT STRATEGY



INFRASTRUCTURE STRATEGIES

PROMOTE TRANSIT PLANNING TO MOVE PEOPLE THROUGHOUT THE REGION



- Promote alignment of economic development with regional transit projects.
- Assess current and future housing availability and its alignment with future growth and employment patterns.
- Assess housing affordability near employment centers and existing infrastructure.

Regional Transit Engagement Series 2017-2018

METROPOLITAN TRANSIT COMMISSION • CENTRALINA COUNCIL OF GOVERNMENTS



Regional Transit

Engagement Series

Partner Updates

2017

2018

**MTC
Call to
Action**

Nov
2016

**Engagement
Government
Managers and
Staff**

- Cabarrus
- Gaston
- Iredell
- Lincoln
- Mecklenburg (N)
- Mecklenburg (S)
- Union
- RFATS

Mar-May
2017

**Engagement
Elected Officials,
Private Sector,
Economic Devt.**

- Cabarrus
- Gaston
- Iredell
- Lincoln
- Mecklenburg (N)
- Mecklenburg (S)
- Union
- RFATS

Aug-Oct
2017

**Public and
Stakeholder
Survey**

Oct–Nov
2017

**Regional
Transit
Summit**



**Call to
Action**

May
2018



Regional Transit Engagement Series 2017

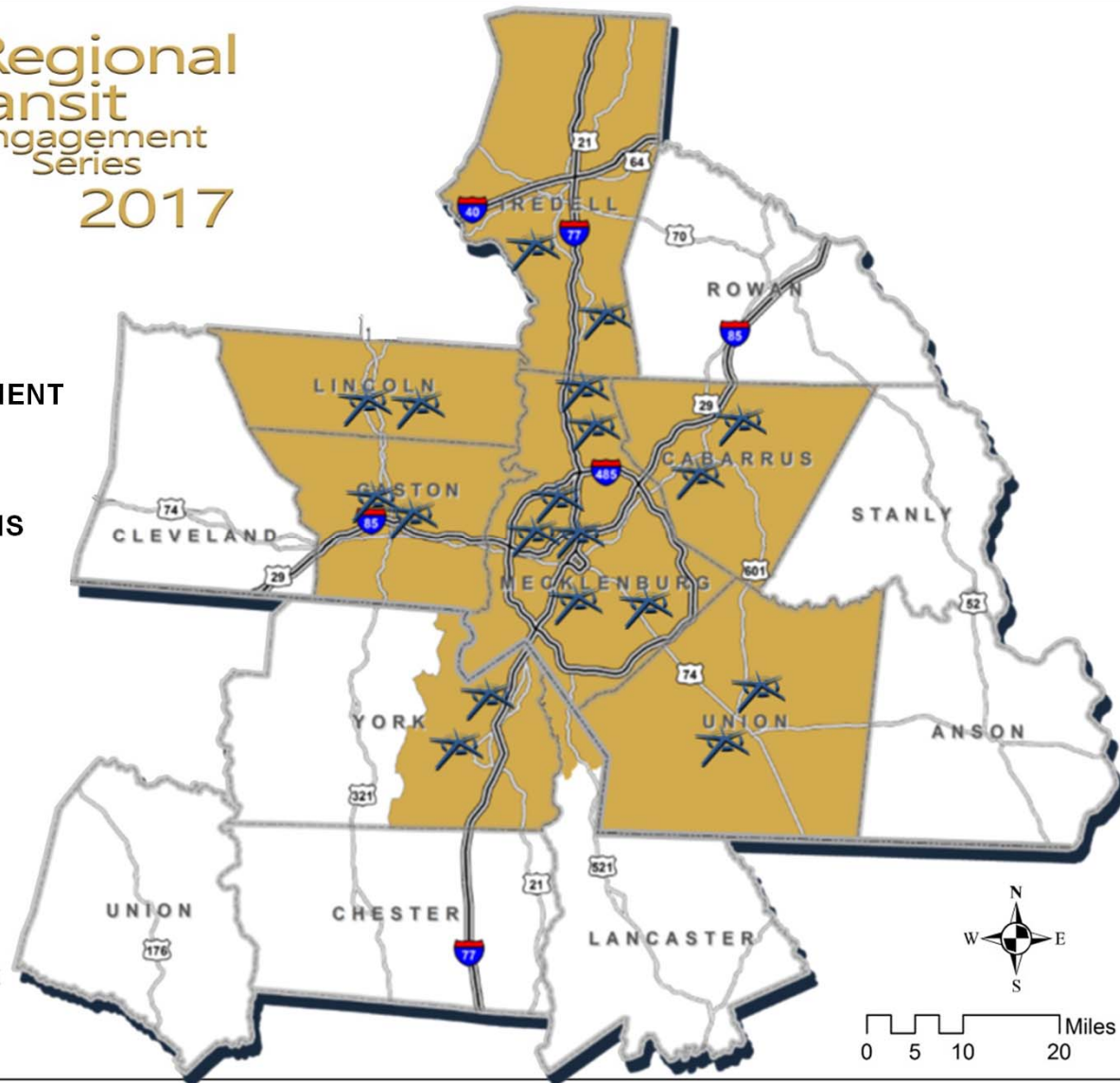
 **ENGAGEMENT
AREA**

 **MEETING
LOCATIONS**



**Metropolitan Transit
Commission (MTC)**

Map created March 2017 by
Centralina Council of Governments





KEY THEMES

- ❖ Global Competitiveness and Job Retention
- ❖ Mobility Options and Meeting Needs of Changing Population
- ❖ Upward Social Mobility and Access





ENGAGEMENT FINDINGS

- ❖ Regional, System-wide Focus
- ❖ Existing, Regional Transit Resource Guide
- ❖ Transit Supportive Messaging Needed



Develop a Regional Transit Plan

- ❖ Long-Term Corridor Planning
- ❖ Near-Term Mobility Options
- ❖ Funding Options
- ❖ Land Use Best Practices
- ❖ Cross-county Coordination



HOW WILL A REGIONAL TRANSIT PLAN HELP YOUR COMMUNITY?

Makes us eligible for more/different funding.

-- Cabarrus County

Help us market our community and region for jobs.

-- Gaston County

Regional vision.

-- Lincoln County

Land use policy coordination with future transit and economic mobility.

-- Mecklenburg County

Communication tool for investments – increased predictability.

-- York/Lancaster counties

Right of way protection and coordination between jurisdictions.

-- Iredell County

Ability to attract business and employees.

-- Lincoln County



Regional Transit

Engagement Series

Secure Funding and Partnerships

MTC Call to Action

Nov
2016

Engagement Government Managers and Staff

- Cabarrus
- Gaston
- Iredell
- Lincoln
- Mecklenburg (N)
- Mecklenburg (S)
- Union
- RFATS

Mar-May
2017

Engagement Elected Officials, Private Sector, Economic Devt.

- Cabarrus
- Gaston
- Iredell
- Lincoln
- Mecklenburg (N)
- Mecklenburg (S)
- Union
- RFATS

Aug-Oct
2017

Public and Stakeholder Survey

Oct–Nov
2017

Regional Transit Summit



Call to Action

May
2018

Regional Transit Plan – Draft Scope

- Cabarrus
- Gaston
- Iredell
- Lincoln
- Mecklenburg (N)
- Mecklenburg (S)
- Union
- RFATS

Summer
2018

Regional Transit Planning

2019

What's Next?

- ❖ Develop a Regional Transit Plan (scope/funding)
- ❖ Continue education and outreach
- ❖ Engage state legislators
- ❖ Develop transit supportive messaging
- ❖ Create a transit resource guide – current scan





Jason Wager, AICP CEP
Principal Planner
jwager@centralina.org



Jason Lawrence
Planner
JLawrence@ci.charlotte.nc.us